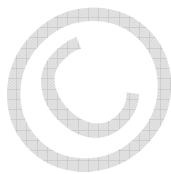




d-PIT

The d-PIT Guide to ...
**Configuring BlackBerry
Enterprise Server v4.1.x MDS
Connection Service**



<http://www.d-pit.com>

Published: 18 – August – 2008

Copyright © d-PIT, 2008.

d-PIT Guide to ...

Configuring BlackBerry Enterprise Server v4.1.x MDS Connection Service

Contents

Configuring BlackBerry Enterprise Server v4.1.x MDS Connection Service	3
MDS Connection Service Configuration.....	3

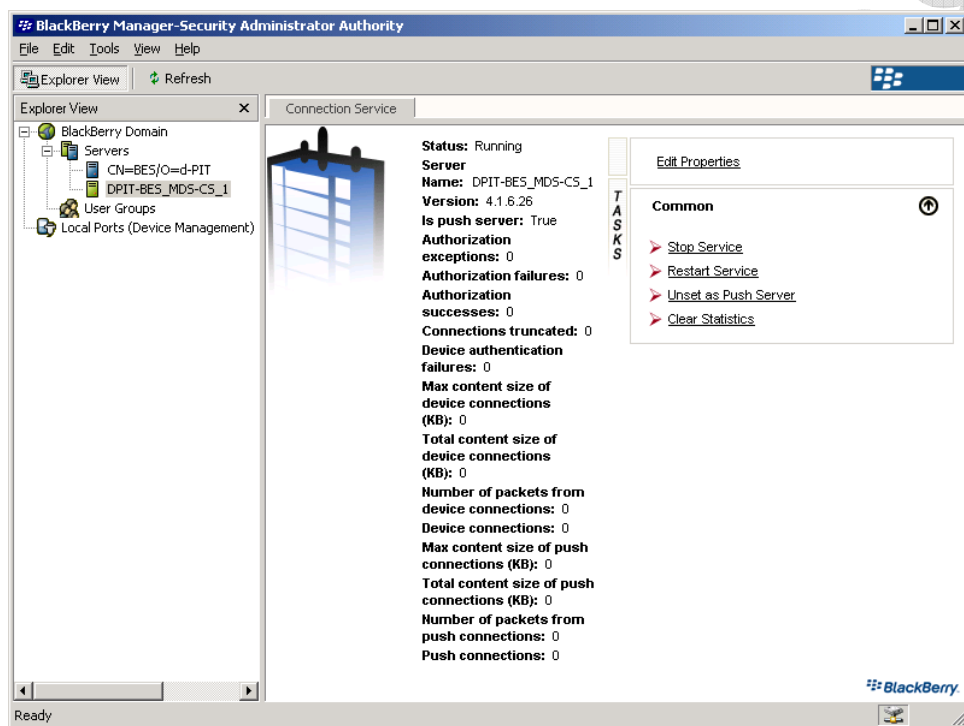
© d-PIT, 2008

Configuring BES v4.1.x MDS Connection Service

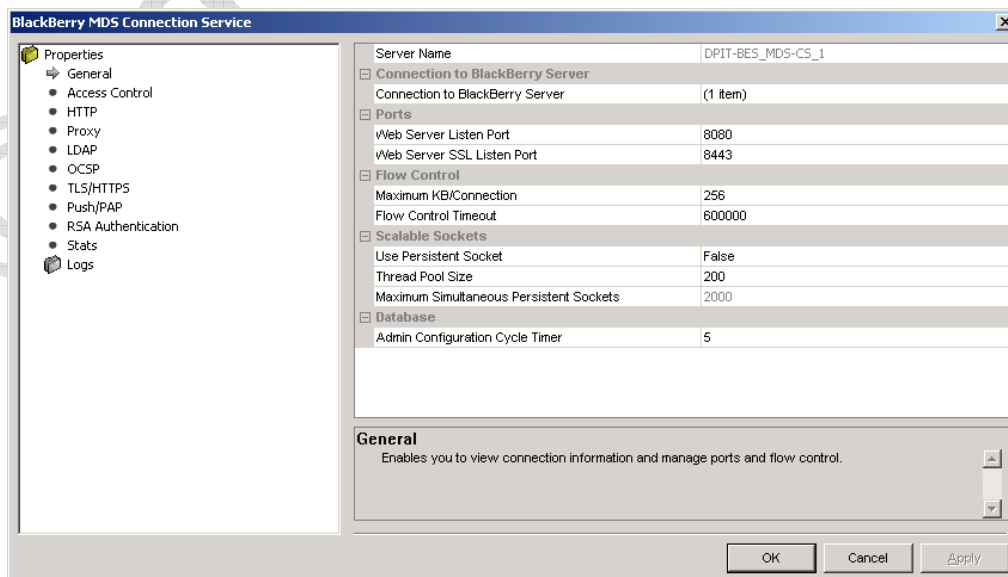
This document presumes that you already have the BlackBerry Enterprise Server v4.1.5 or v4.1.6 installed and functioning, and that you require the server to route all Internet requests via a corporate proxy server.

MDS Connection Service Configuration

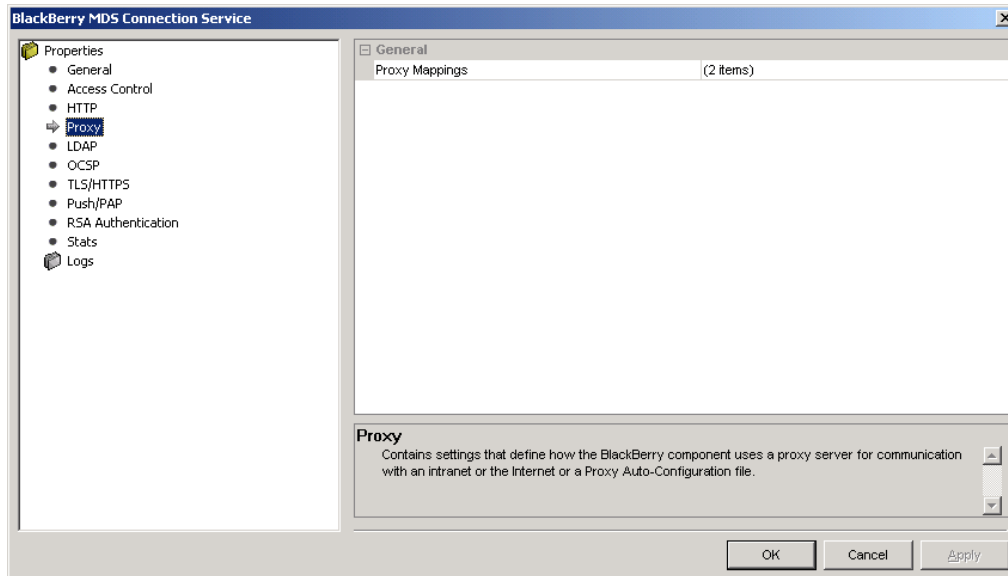
1. Launch **BlackBerry Manager**
2. Navigate to the MDS instance (e.g. DPIT-BES_MDS_CS_1)



3. Click on **Edit Properties**



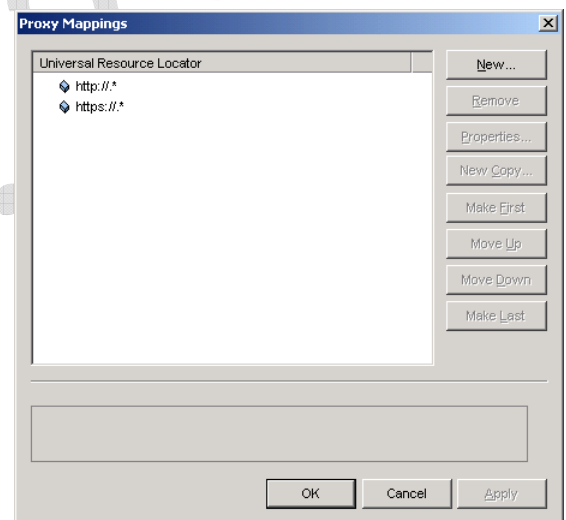
4. Click on **Proxy**



5. Click on the **Proxy Mappings** field, and then click on the ... that appears.

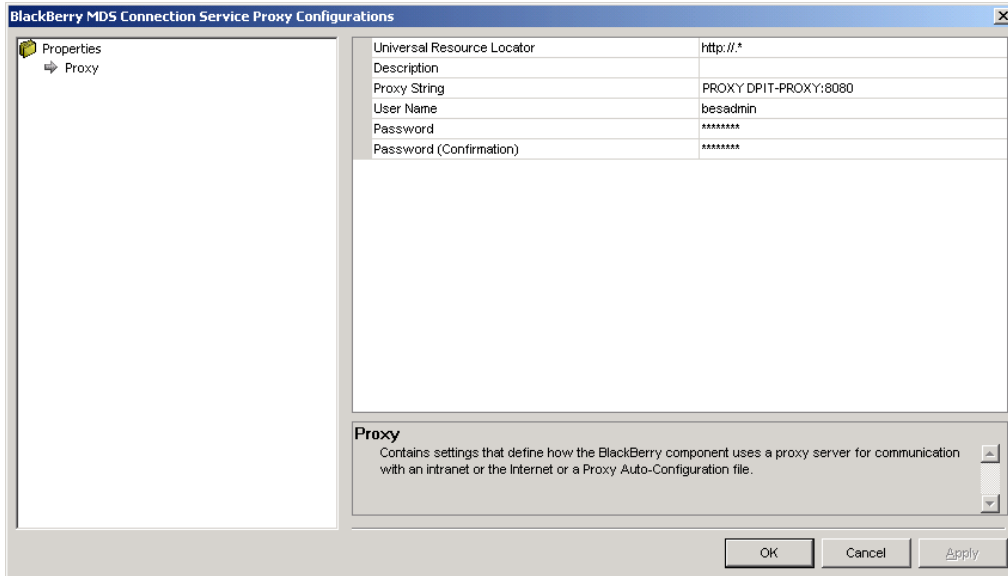
6. The **Proxy Mappings** screen appears

There should be at least two entries in here.
One for `http://.*` and one for https://.*



7. If there are two defined, proceed to step 10.
8. If there are none defined, click on **New**.
9. Create a new entry, where the Universal Resource Locator is `http://.*` (and another one separately with the Universal Resource Locator is `https://.*`)

10. Highlight the first one (http://.*), and click on **Properties**.



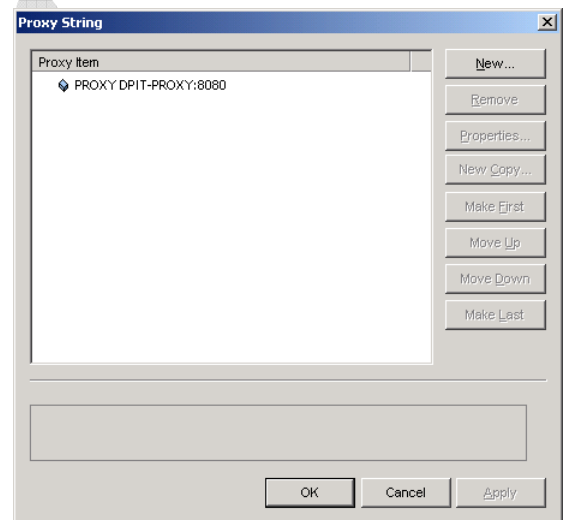
11. The **Proxy String** details the proxy server that the MDS Service is to use

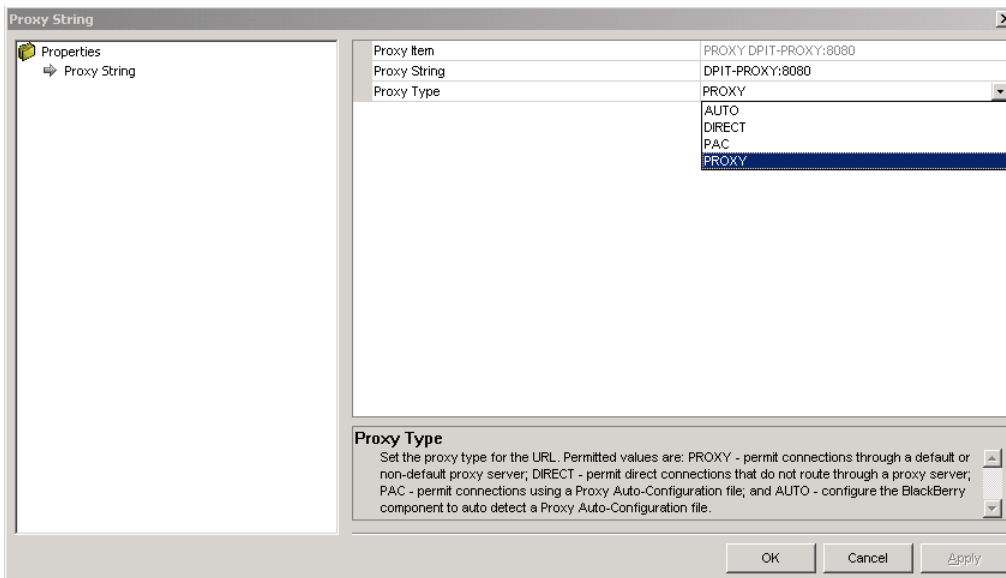
12. The **User Name** and **Password** fields may be filled in which results in the user not having to authenticate with the proxy server.

If these fields are not completed, then the user will be prompted for authentication on the Proxy server.

13. If the Proxy String field is not populated, click on the field, and then click on the ... that appears.

14. If there is no **Proxy Item** defined, click on **New**, otherwise highlight and click on **Properties**.





15. Define all of the settings for the Proxy server as required.

In this example, the proxy server is called DPIT-PROXY, and is on Port 8080.

16. Once all of the details are correct, click on **Apply**, followed by **OK**.

17. Click on **OK**.

18. Click on **Apply** and **OK**.

19. Repeat steps 7 thru 18 for `https://.*`

20. Back at the mail BlackBerry Manager screen, click on **Restart Service**.