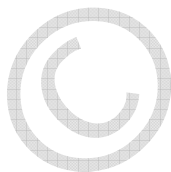




d-PIT

The d-PIT Guide to ...
**Installing BlackBerry
Enterprise Server v4.1.5 for
Lotus Domino**



<http://www.d-pit.com>

Published: 01 – June – 2008

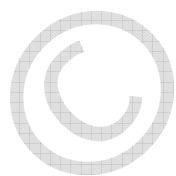
Copyright © d-PIT, 2008.

d-PIT Guide to ...

Installing BlackBerry Enterprise Server v4.1.5 for Lotus Domino

Contents

Introduction.....	3
Pre-Requisites.....	4
Installing BlackBerry Enterprise Server v4.1.5	6
Installation Procedure	6



d-PIT, 2008

© d-PIT, 2008

Introduction

The BlackBerry Enterprise Server v4.1.5 is the latest service pack revision of the BlackBerry software.

There are two different distributions of the service pack, and this document deals with the full installation package that may be obtained from your mobile network carrier.

We are currently producing a full BlackBerry Administrators Guide, which will be available from our web-site shortly.

© d-PIT, 2008

Pre-Requisites

In order to successfully install the BlackBerry Enterprise Server, there are a number of pre-requisites that must be met.

These pre-requisites are:

- Operating System may be any of the following:
 - Microsoft Windows 2000 SP4 (Server or Advanced Server)
 - Microsoft Windows Server 2003 or later
 - Microsoft Windows Server 2003 (64-bit)
- Messaging environment may be any of the following:
 - IBM Lotus Domino Version 5.0.12
 - IBM Lotus Domino Version 6.0.4 or later
 - IBM Lotus Domino Version 6.5.1 or later
 - IBM Lotus Domino Version 7.0 or later
 - IBM Lotus Domino Version 8.0
 - IBM Lotus Domino Express Version 7.0
 - IBM Lotus Domino Express Version 8.0
- BlackBerry server Messaging server installed may be any of the following:
 - IBM Lotus Domino Version 5.0.12 or later
 - IBM Lotus Domino Version 6.0.1 Critical Fix Pack 2 or later with primary Domain Directory
 - IBM Lotus Domino Version 6.5.4 or later with primary Domain Directory
 - IBM Lotus Domino Version 7.0 with a primary Domain Directory (7.0.2 or higher required for Microsoft Windows Server 2003 (64-bit))
 - IBM Lotus Domino Version 8.0 with a primary Domain Directory
 - IBM Lotus Domino Express Version 7.0
 - IBM Lotus Domino Express Version 8.0
- A firewall or proxy with the following conditions:
 - support for the BlackBerry Enterprise Server to initiate an outgoing, two way TCP/IP connection to an external server on port 3101

- support for the resolution of Internet addresses using DNS
- transparency of the proxy server for proxy firewalls
- Credentials from the BlackBerry Enterprise Server installation media:
 - CAL key
 - SRP identifier
 - SRP key
 - SRP host
- Local account on the computer with full administrator access to the server. NOT the administrator account itself.
 - Normally we would create an account something like **AdminBES**, and ensure that this account is added to the Administrators group on the local computer.

Once all of the pre-requisites have been met, it is possible to proceed with the installation of the BlackBerry Enterprise Server software.

Installing BlackBerry Enterprise Server v4.1.5

Once all of the pre-requisites have been met, and the Lotus Domino server that is going to act as the BlackBerry Enterprise Server has been installed and configured, can route both Internal mail to Lotus Notes users, and also route SMTP mail, either through a hub server or directly, then the BlackBerry Enterprise Server software may be installed.

Installation Procedure

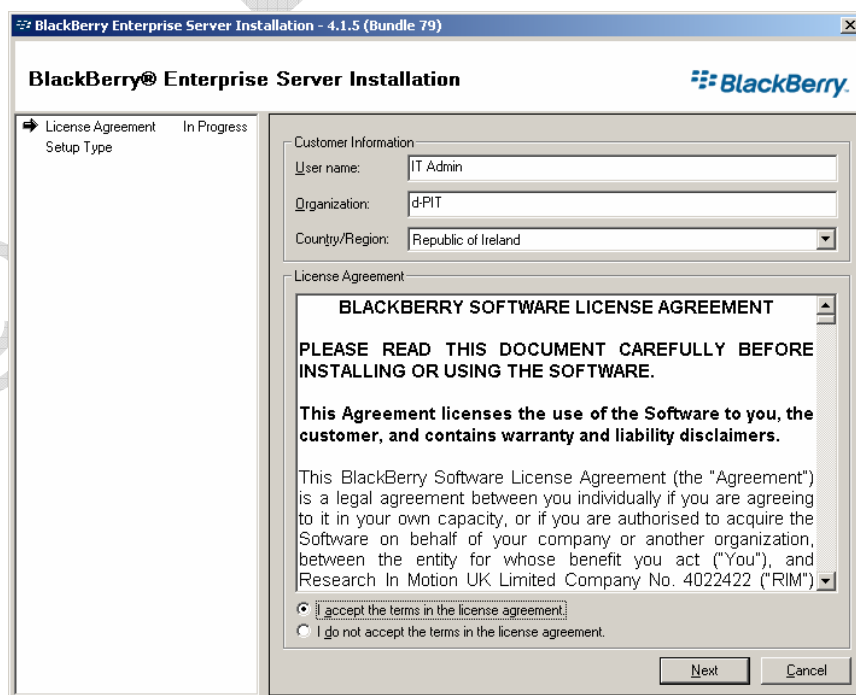
Log in to the server as the local administrative account that as the Administrative account that you configured as a part of the pre-requisites.

Shut down the Lotus Domino server, and ensure that the service is set to manual. It may be changed back to automatically start after the installation has been completed.

To begin, locate the SETUP.EXE on the root of the CD-ROM that you were provided with, and open the application.

Once the installation begins, follow this process to complete the installation:

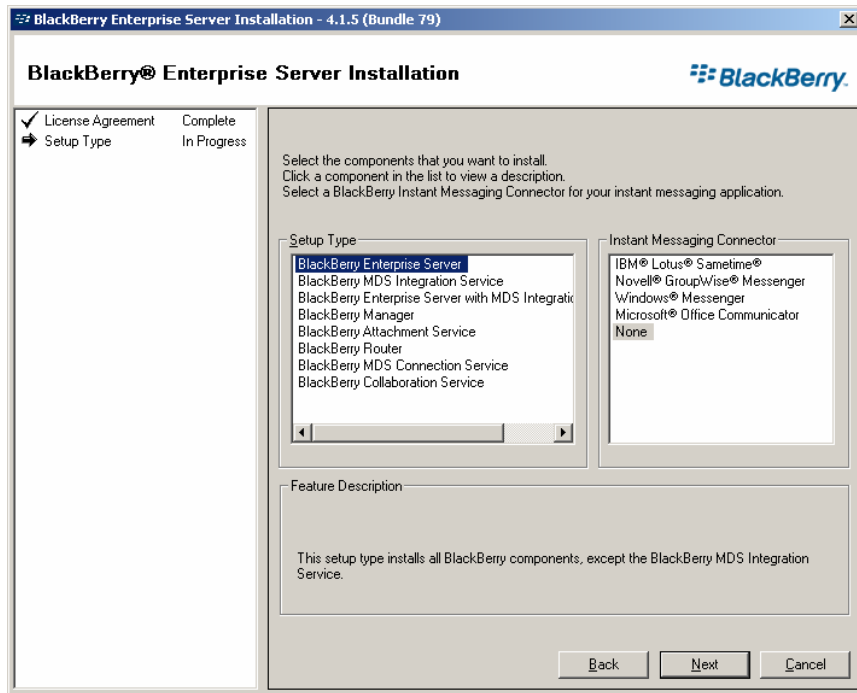
1. On the **License Agreement** screen, enter the User name, Organisation name, and select the Country/Region to be that of your home country.



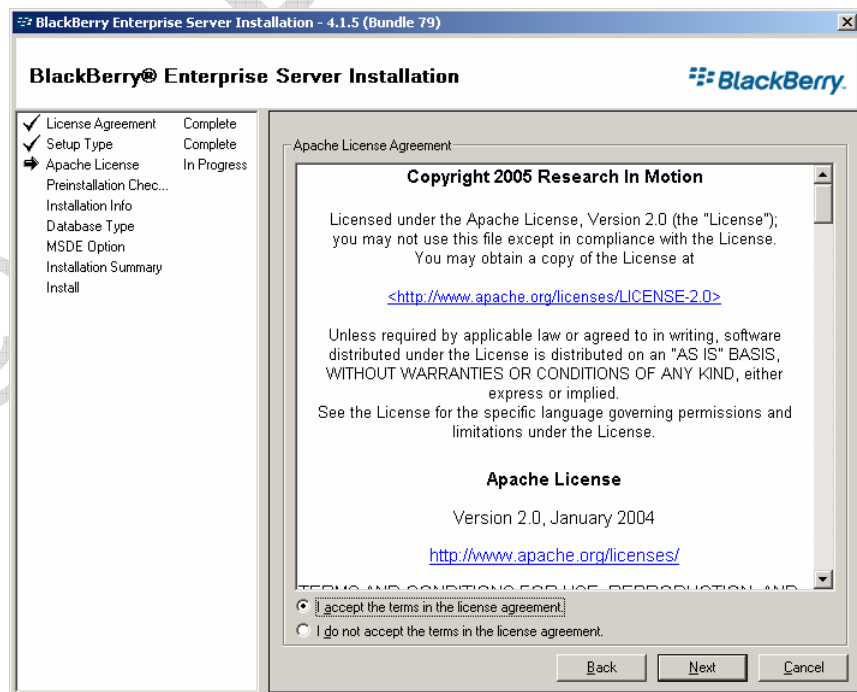
2. Click on **Next** to proceed.

3. On the Setup Type screen, select the type of installation that you require.

As we are installing a basic BlackBerry Enterprise Server, we will just select the defaults.

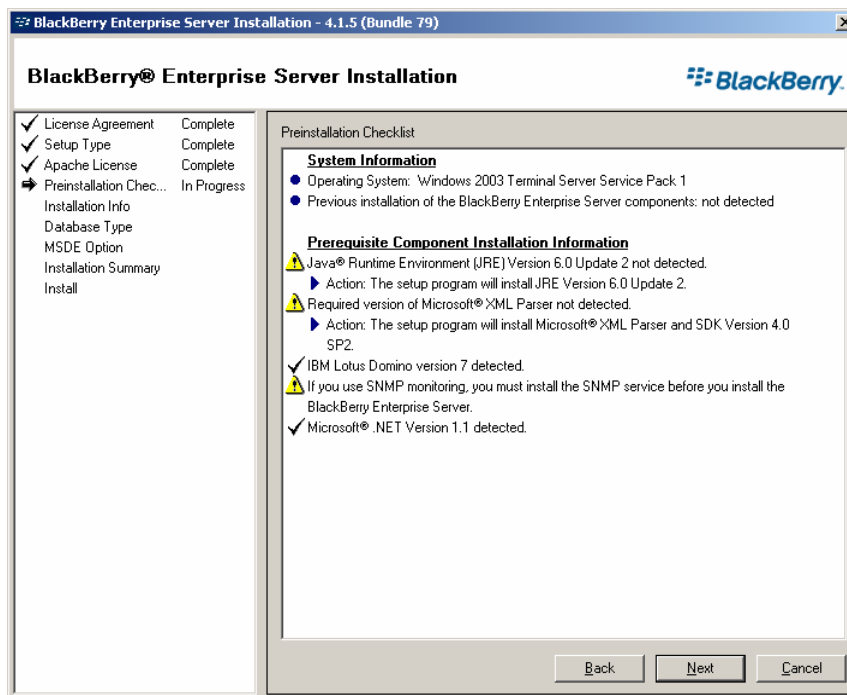


4. Click on **Next** to proceed.
5. On the **Apache License** screen, select "I accept the terms in the license agreement"

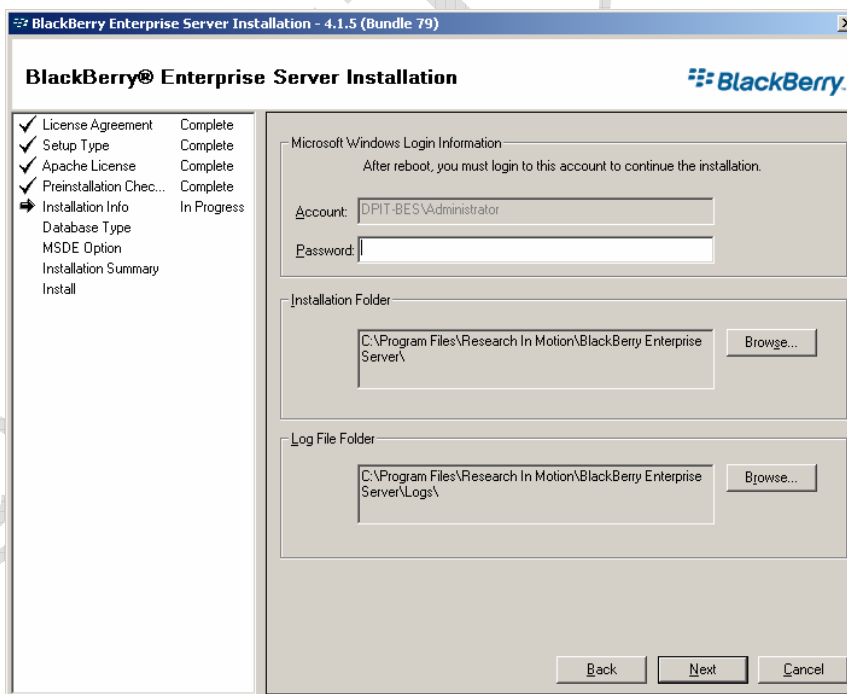


6. Click on **Next** to proceed.

7. The **Preinstallation Checklist** screen appears, and shows you a list of what will be installed as a part of the installation of the BlackBerry software.



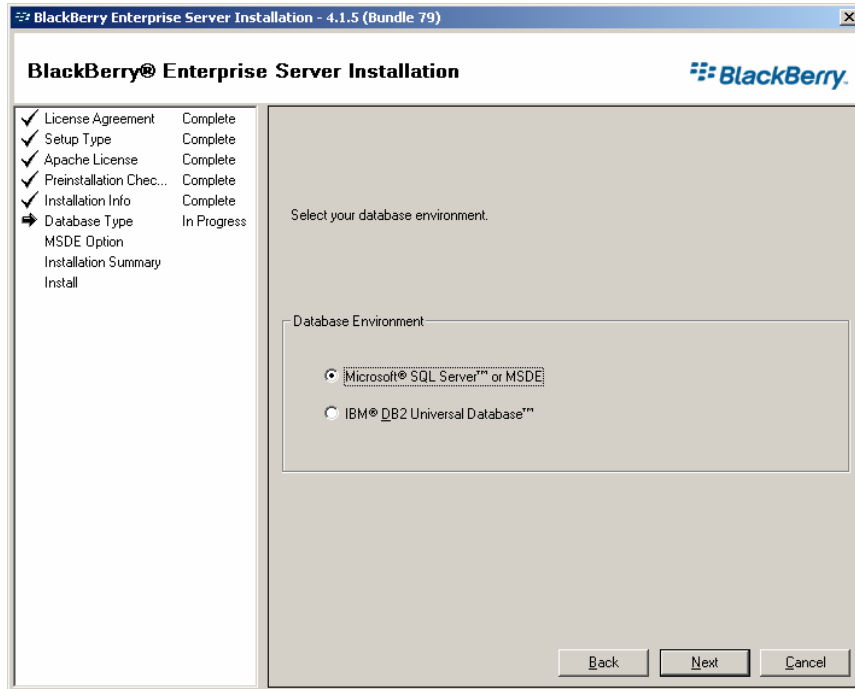
8. Click on **Next** to proceed.
9. The **Installation Info** screen appears.



10. Enter the password for the user that you are currently logged into the server as. This user account/password will be used by a number of BlackBerry services once the installation has been completed.
11. You may change the installation and/or the log file folder should you so desire.

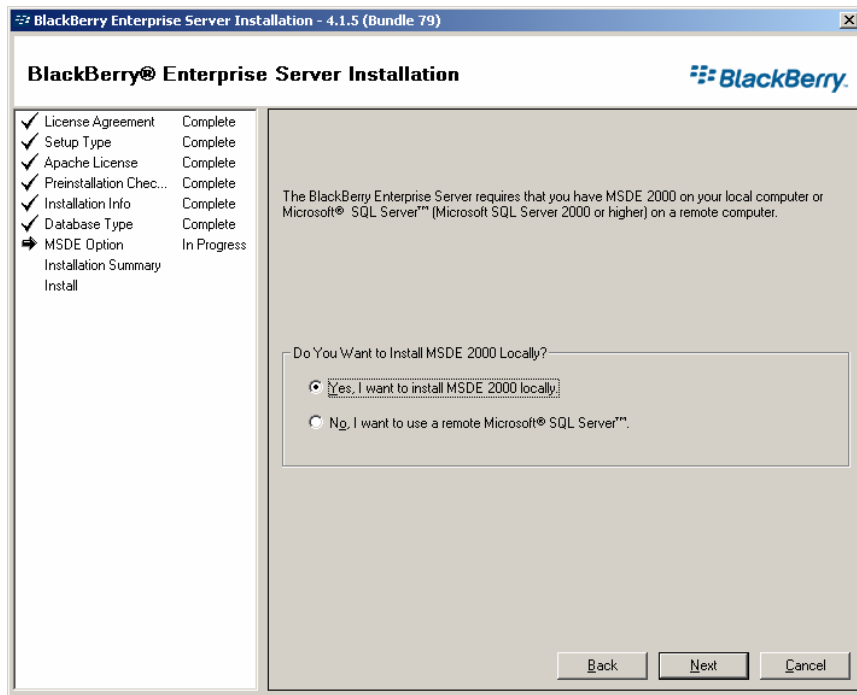
12. Once all of this information is completed, click **Next** to proceed.
13. The **Database Type** screen appears. At this stage, you will decide whether you want to use a Microsoft SQL based database or an IBM DB2 based database.

In all of the installations that we have completed, we have used a Microsoft SQL based database.

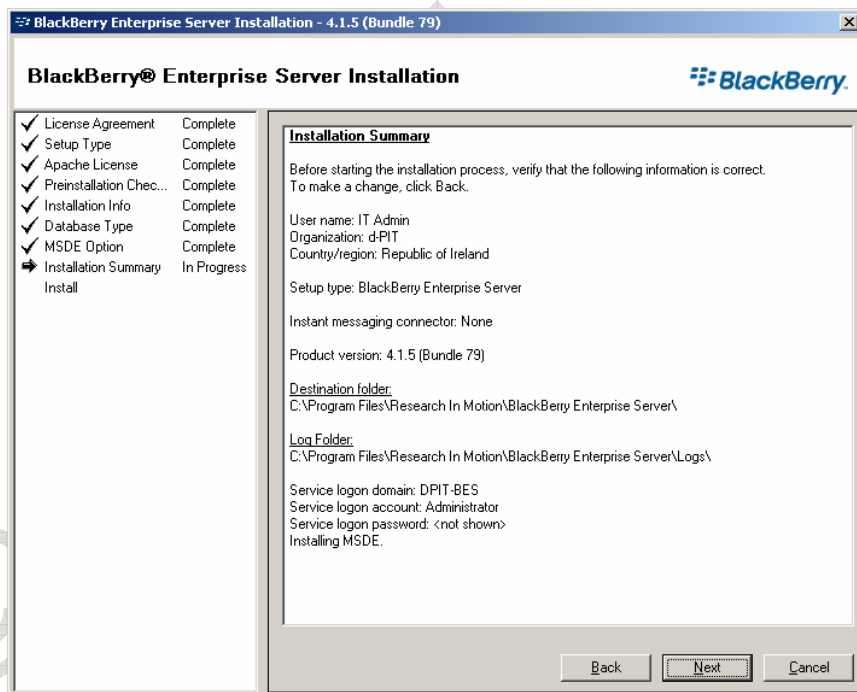


14. Click on **Next** to proceed.
15. The **MSDE Option** screen appears.

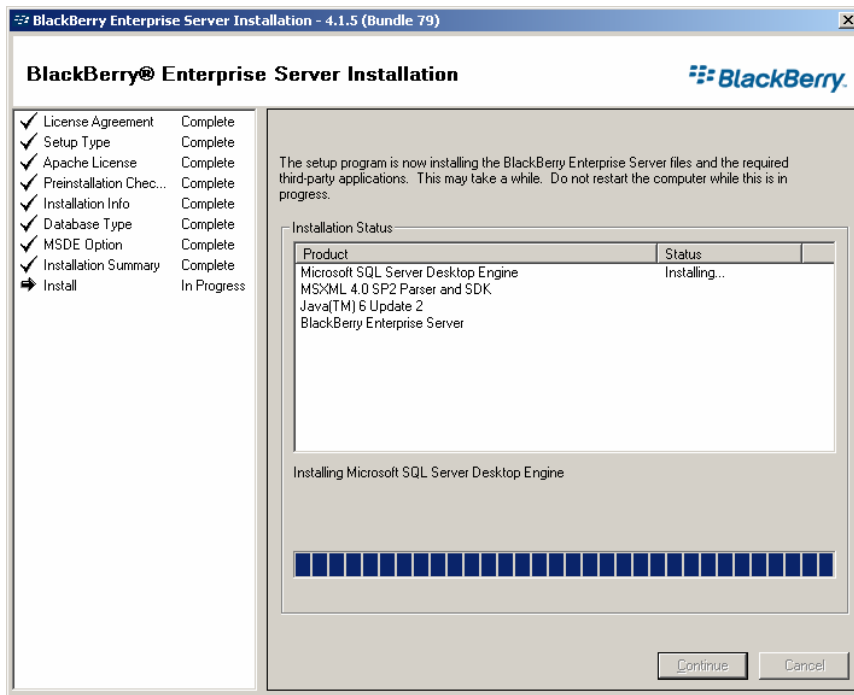
In the event that you do not have an SQL server on your network, or you predict that the number of users that the BlackBerry Enterprise Server will support will be low (<500), then select the MSDE local installation, otherwise, utilise the remote SQL server that is on your network.



16. Click on **Next** to proceed.
17. The **Installation Summary** screen appears.

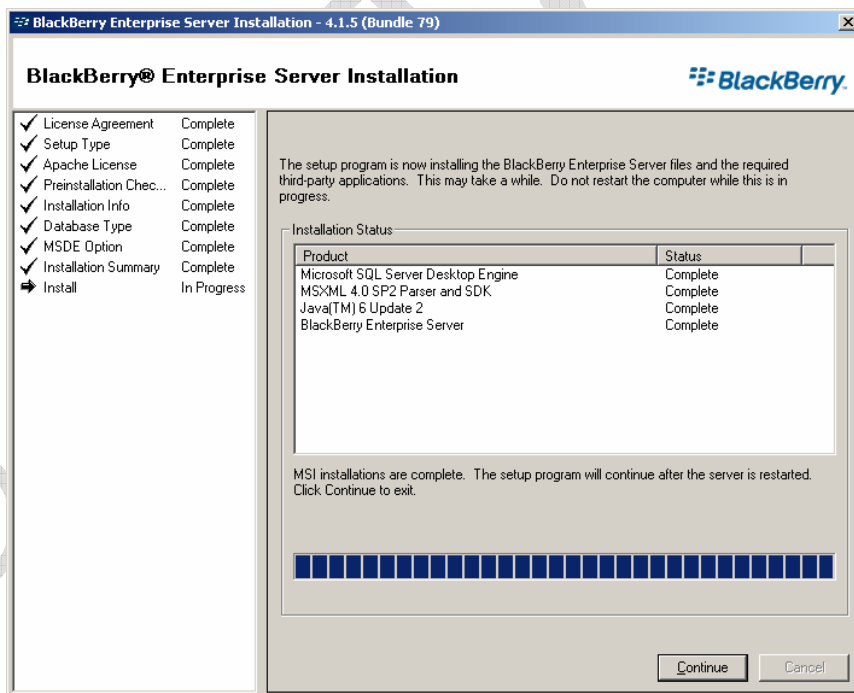


18. Click on **Next** to proceed.
19. The installation now commences, and all of the required components are installed on the server.

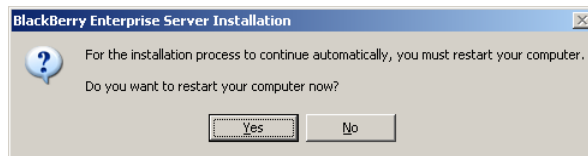


This installation may take some time, depending on the specification of the hardware that it is running on.

- Once the installation has completed, the **Continue** button will be enabled.



- Click **Continue** to proceed.
- The installation procedure will now request that the server be restarted. You **must** restart the computer before you can proceed with the initial configuration of the BlackBerry Enterprise Server software.

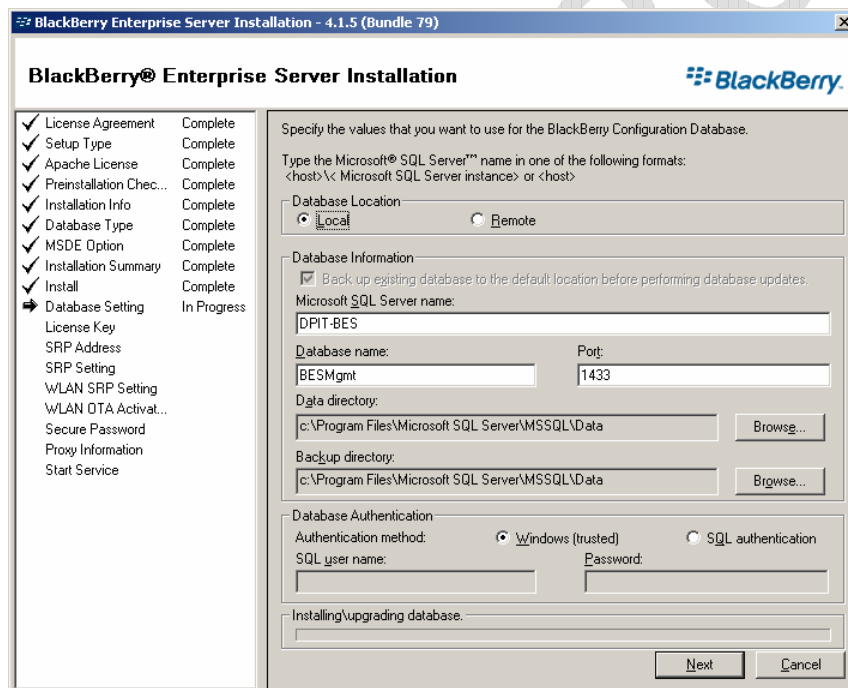


Once the server has been rebooted, log in as the same user that you installed the software as.

Once you have successfully logged in, the BlackBerry Enterprise Server installation will continue.

23. In the **Database Setting** screen, you will need to select either a **Remote** or **Local** database.

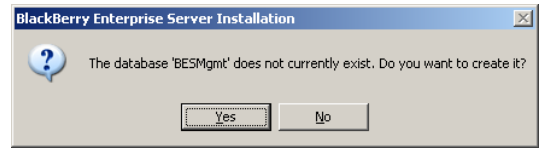
Normally we will leave these settings at default and continue with the configuration.



24. Click **Next** to proceed.

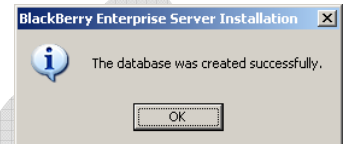
25. You will be prompted that the BESMgmt database do not exist.

You **must** create this database before you can complete the installation of the BlackBerry Enterprise Server.



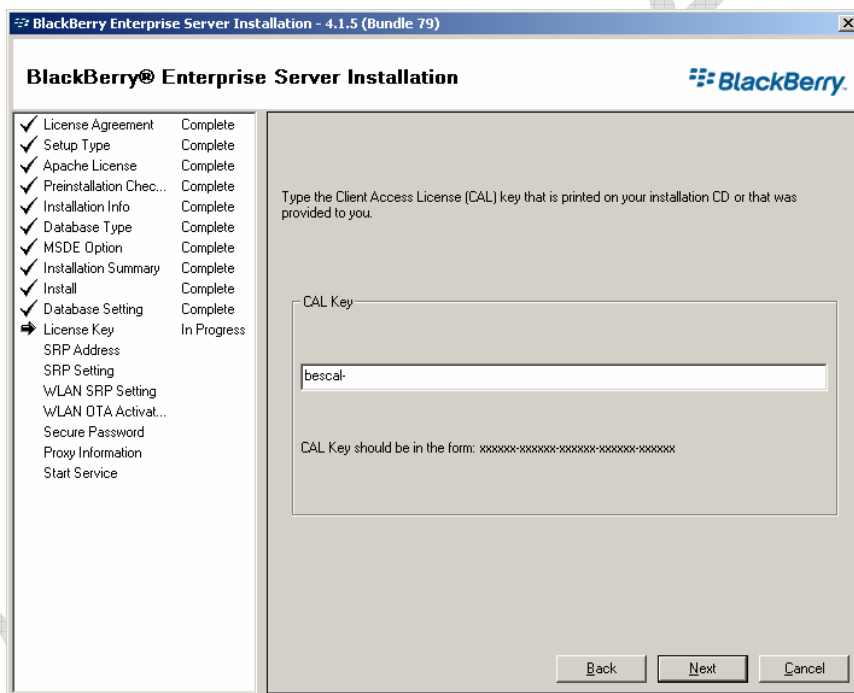
Click on **Yes** to create the SQL database.

26. Once the database has been created, click on **OK**.



27. The next piece of information that is required is the Client Access License (CAL) key that was provided with the installation package.

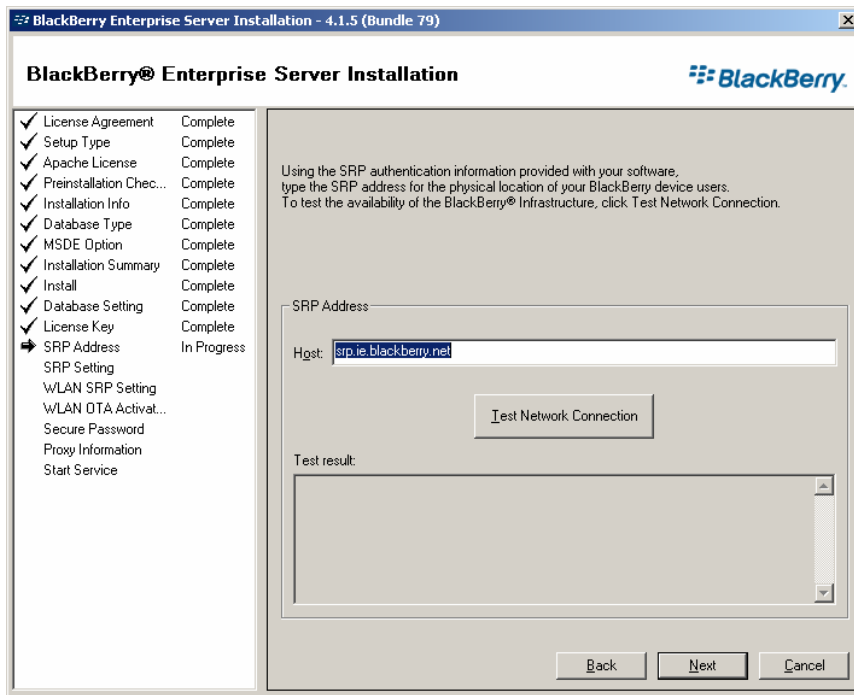
This CAL should be in the form of XXXXX-XXXXX-XXXXX-XXXXX-XXXXX, and will normally begin with **bescal-**.



28. Enter your CAL key, and click on **Next** to proceed.

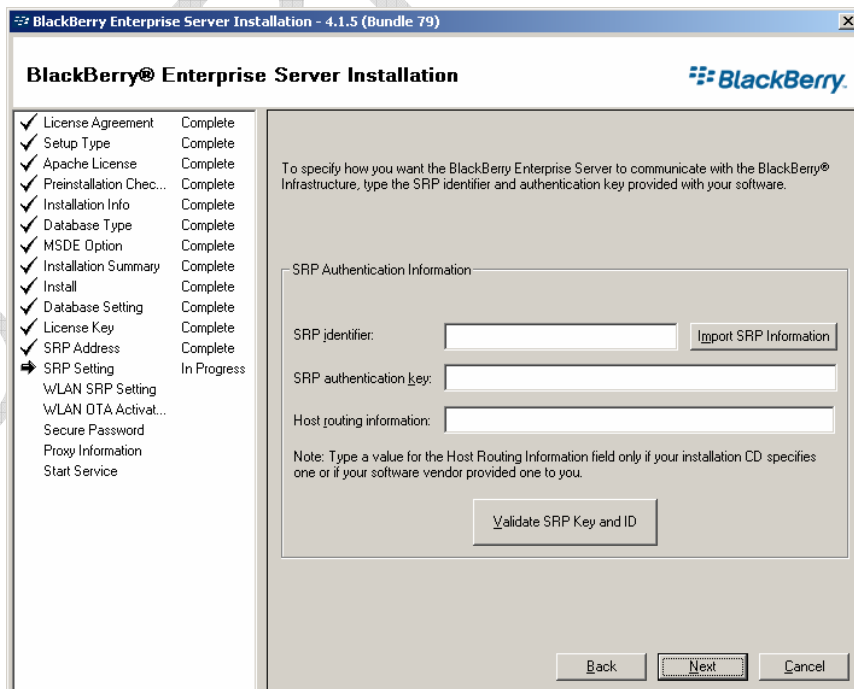
29. The next screen allows you to set the SRP Address.

The SRP Address is critical to the functioning of the BlackBerry Enterprise Server, and this is the address that the server will communicate with over Port 3101 (as defined in your pre-requisites).



You may test the Network Connection by clicking on the **Test Network Connection** button. It is strongly recommended that you perform this test – in the event that the test fails, it indicates that there is a communications issue – normally firewall related, where the Port 3101 is not permitted.

30. Click on **Next** to proceed.
31. The **SRP Setting** screen appears. The SRP Identifier and SRP Authentication Key were supplied with your software, and are unique to your installation.



The details of this SRP combination should be kept strictly confidential, and should never be shared with any one. In the event that you have connectivity issues, the SRP Identifier will be requested by RIM Support, but never the authentication key.

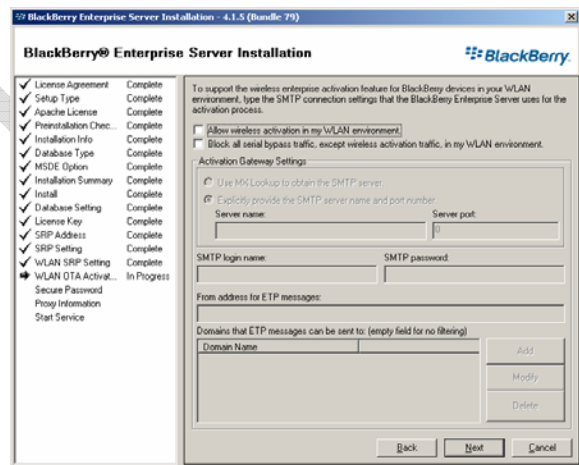
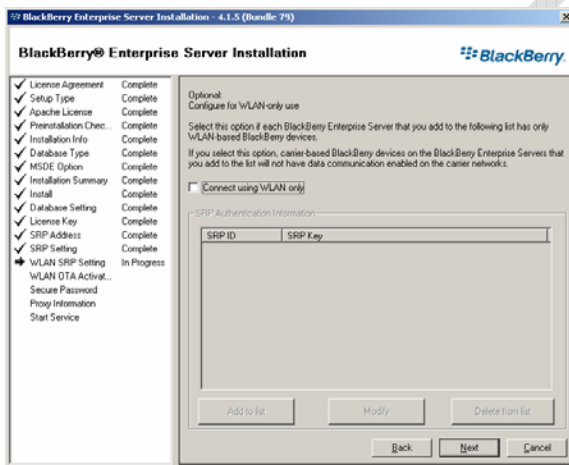
32. Enter you SRP Identifier and SRP Authentication Key, or alternatively you could import it from a Text file.

The format of the text file for the SRP Key is as follows:

Name of file: srp_auth.srp
1st Line: contains only your SRP Identifier
2nd Line: contains only you SRP Authentication Key

Sample file: S111111
 XXXX-XXXX-XXXX-XXXX-XXXX-XXXX-XXXX-XXXX-XXXX-XXXX

33. Click on **Next** to proceed.
34. The next two screens are for WLAN setups, which by default are not enabled (particularly here in Ireland), so you can just click **Next** to continue with the installation.



35. The next screen is for Secure Password, and may be set if required.

The screenshot shows the BlackBerry Enterprise Server Installation window. On the left, a progress list shows steps from License Agreement to Start Service, with 'Secure Password' highlighted as 'In Progress'. The main area contains instructions for the Instant Messaging Connector server, with input fields for Host, Port (0), and Transport (HTTPS selected). Below, there are fields for a Communication Password and a checkbox to override the default password. 'Back', 'Next', and 'Cancel' buttons are at the bottom.

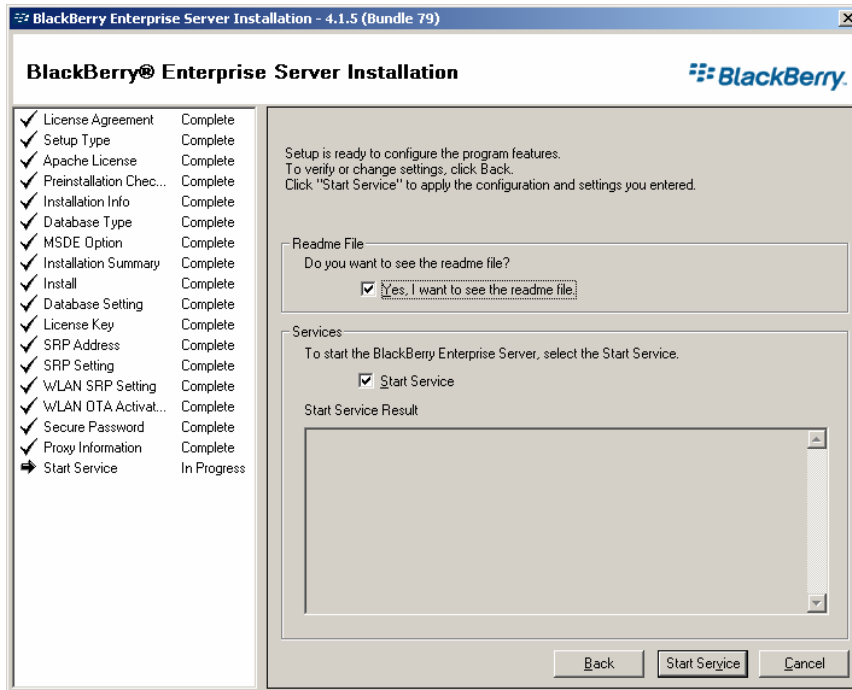
36. Click on **Next** to proceed.
37. The **Proxy Information** screen appears. If your organisation uses a proxy server for Internet access, then this is where you enter the appropriate settings.

Don't worry too much about this, as it can be set later if required.

The screenshot shows the Proxy Information screen in the BlackBerry Enterprise Server Installation window. The progress list on the left now shows 'Proxy Information' as 'In Progress'. The main area has a checkbox for 'Turn on proxy settings' and input fields for Host name, Port, and SSL port. 'Back', 'Next', and 'Cancel' buttons are at the bottom.

38. Click on **Next** to proceed.
39. The **Start Service** screen appears.

The installation, and basic configuration of the BlackBerry Enterprise Server is now completed.



40. Click on **Start Service** to proceed.
41. As each service starts, the Start Service Result will appear above. Once all of the services have started, the BlackBerry Enterprise Server is ready for use.

